

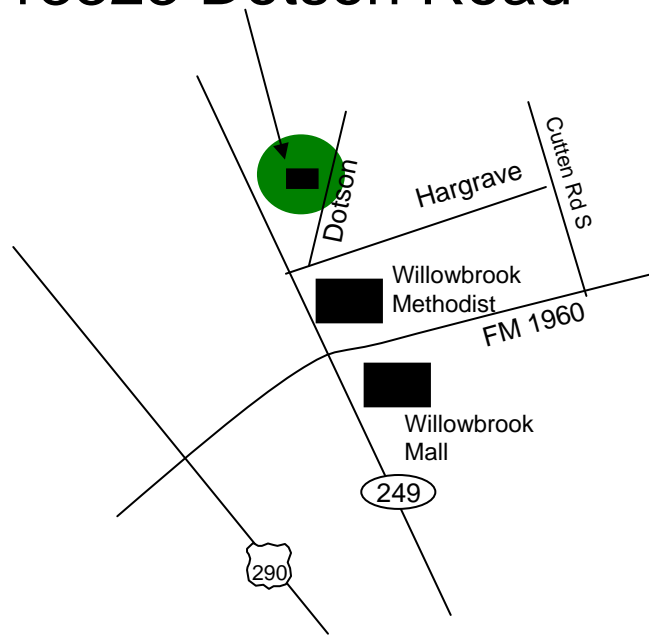
13323 Dotson Road

FOR LEASE

Willowbrook Professional Complex



13323 Dotson Road



Contact:

Brenda Pennington Commercial Real Estate, Inc.
Brenda@PenningtonCommercial.com
713.621.5050

Space Available:

- ✓ Two-story 6,000 SF office building
- ✓ Base rent \$20/SF NNN
- ✓ Tenant pays own electric (sub-metered)
- ✓ Approximately 1,500 sf available for immediate move in on the second floor.

Building Features:

- ✓ New construction, ADA compliant
- ✓ 5-10 year lease term options
- ✓ Interior Medical Build Out

Area Amenities:

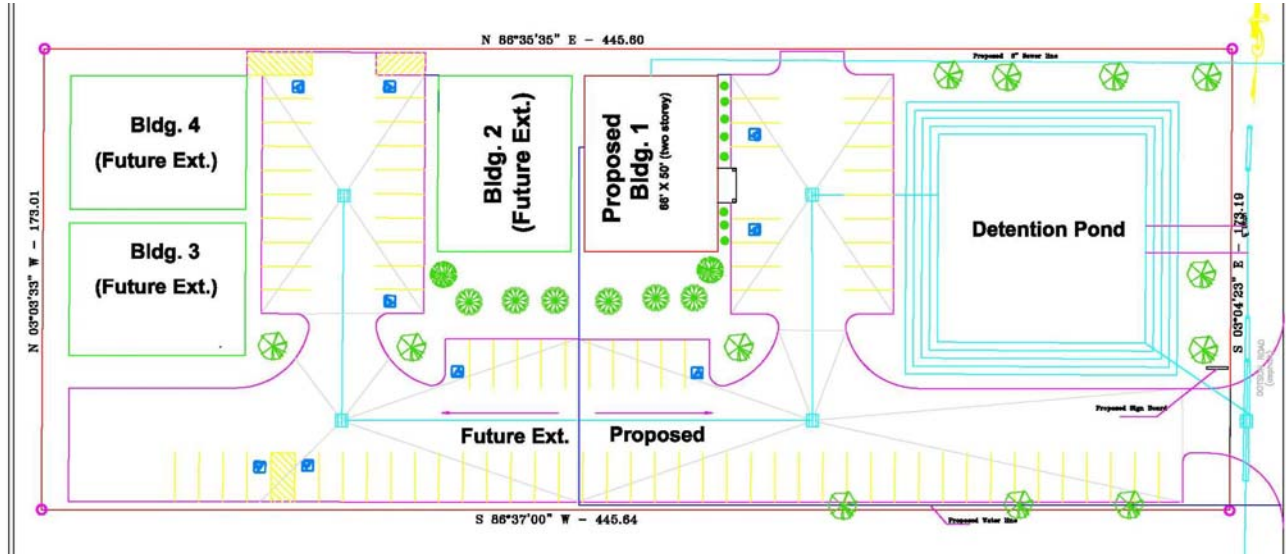
- ✓ Immediate access to SH 249, FM 1960, I-45 and Beltway 8
- ✓ Near area hospitals and the HP campus
- ✓ Prestigious residential community
- ✓ Numerous retail, restaurant, fitness and banking outlets in Champions Forest and Willowbrook Mall
- ✓ Convenient to several area attractions such as Barbara Bush/Harris County Library, Pearl Fincher Museum of Fine Arts, Harris County Court House and the Centrum.

PENNINGTON
Brenda Pennington Commercial Real Estate, Inc.

13323 Dotson Road

FOR LEASE

Site Plan



Contact:

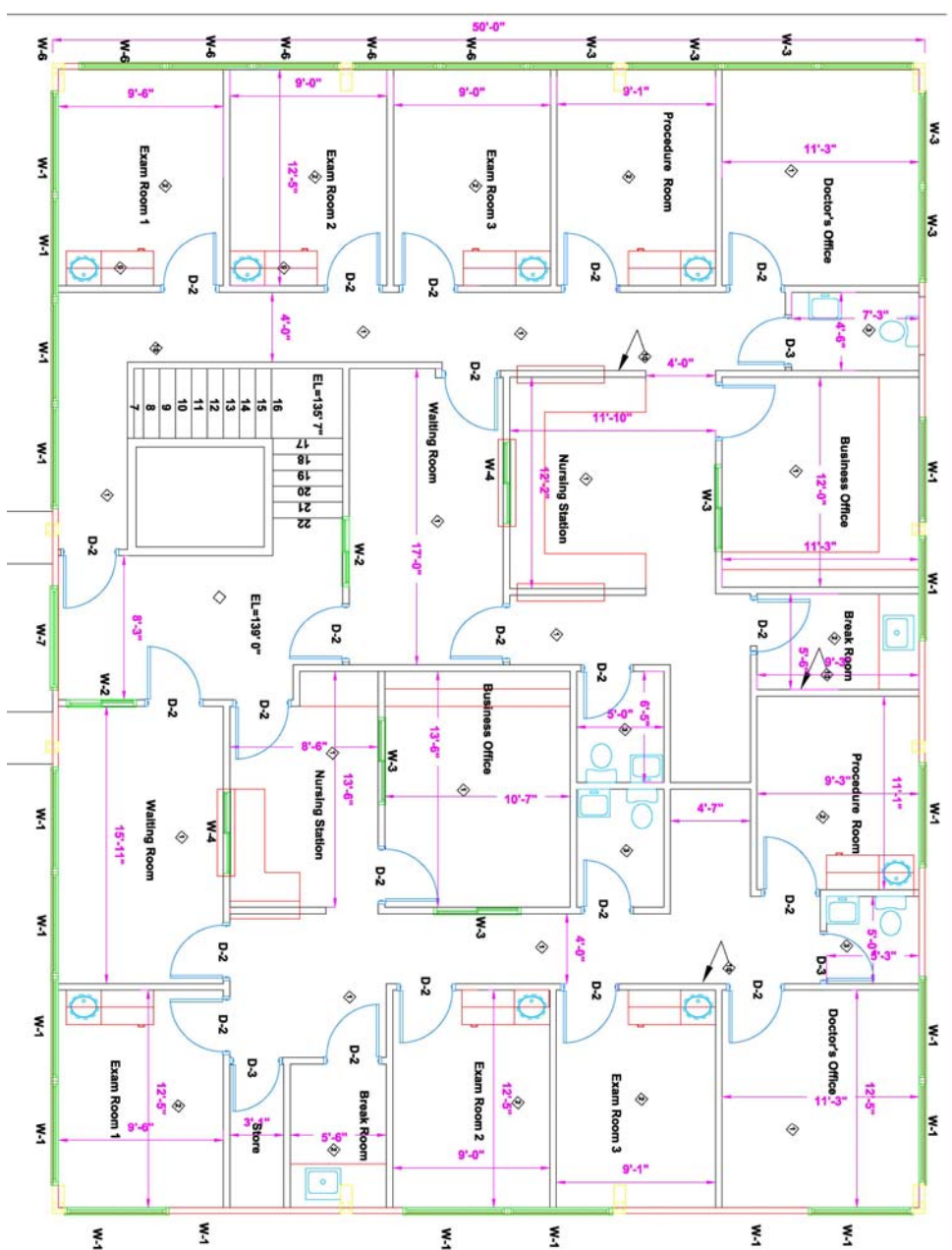
Brenda Pennington Commercial Real Estate, Inc.
Brenda@PenningtonCommercial.com
713.621.5050

PENNINGTON
Brenda Pennington Commercial Real Estate, Inc.

13323 Dotson Road

FOR LEASE

Second Floor



Contact:

Brenda Pennington Commercial Real Estate, Inc.
Brenda@PenningtonCommercial.com
713.621.5050

